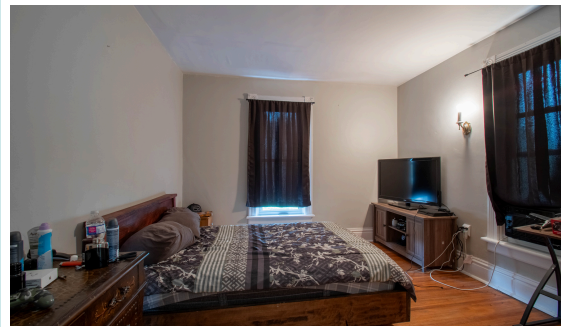


270 Broadway Street, Tillsonburg



Stunning location here with this large ravine lot right in the heart of downtown Tillsonburg. This spacious 2-storey is set back from the road and offers an expansive backyard with a ravine view. This home welcomes you with large principal rooms, hardwood floors, 4 bedrooms, and 1.5 baths. The detached garage has hydro and offers space to tinker or park 1 vehicle. There is also a full basement for extra space. Many updates have been done, including some windows and breaker panel. Asking \$579,000.00 MLS®

Bedrooms:	4	Bathrooms:	1+1
Water Source:	Municipal	Sewer:	Municipal
Heat Source:	Forced Air/Gas	Taxes:	\$2,868.75/2023
Sq. Ft.:	2,200 sq.ft	Lot Size:	52' x Irregular

**YOUR LOCAL
REAL ESTATE TEAM**

Erie's Edge
Real Estate Ltd., Brokerage

REALTORS® Greg Mitchell, Krystal West,
Scott Gilvesy and Jeff VanRybroeck

519.409.7653
(SOLD)

www.YLRET.com

