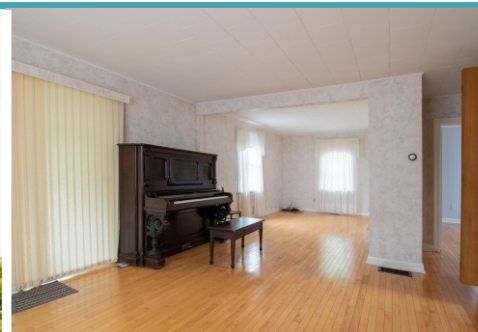




53871 Church Street, Richmond



Fabulous 2-storey home situated on a 1.6 +/- acre lot in the small village of Salford, a short 4.5 km drive to Highway 401. This country home offers many updates and modern conveniences, such as main floor laundry, a modern kitchen with a walk-in pantry, and a massive family dining area with an expansive view of the backyard retreat. The main floor primary bedroom and ensuite are spacious, with a walk-in closet for extra storage. Upstairs there are 2 more bedrooms, 1 bath, and a large landing used as a sitting area. Attached to this home is a 45ft x40ft- 2 bay heated shop with roll-up doors measuring 14ft(w)x12ft(h) and a gas furnace. Asking \$399,900 MLS®

Bedrooms: 3

Bathrooms: 1

Water Source: Community Well

Sewer: Septic System

Heat Source: Forced Air/Gas

Taxes: \$2,444 / 2022

Lot Size: 81.56' x 131.99'

Sq. Ft.: 1,160 sq. ft.

YOUR LOCAL
REAL ESTATE TEAM

Erie's Edge
Real Estate Ltd., Brokerage

REALTORS® Greg Mitchell, Krystal West,
Scott Gilvesy and Jeff VanRybroeck

519.409.7653

(SOLD)

www.YLRET.com

