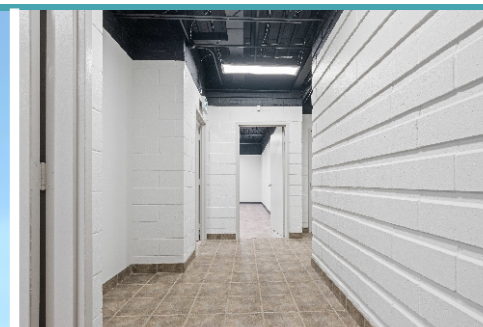




650 Ireland Road, Simcoe



Make a home for your business in this newly renovated commercial space with a modern industrial feel. This versatile unit houses 4 offices with one of them large enough for a multi purpose room. Zoning allows for a variety of businesses such as graphic & design, telecommunications, engineering, wholesale outlet, research & development, shared office space, etc. Best of all the monthly rent includes utilities and internet. Landscaping will be completed in this Spring. Located within close proximity to the many amenities Simcoe has to offer. Book your tour today! Asking \$2,300/Month Gross MLS®

Water Source:	Municipal	Sewer:	Septic System
Heat Source:	Forced Air / Gas	Lot Size:	288.40' x 260.26'
Sq. Ft.:	1,322 sq. ft.		



Heather Zuskan

Sales Representative

519.420.7347 | Heather@EriesEdge.com

www.EriesEdge.com

Erie's Edge
Real Estate Ltd., Brokerage
519.426.2072