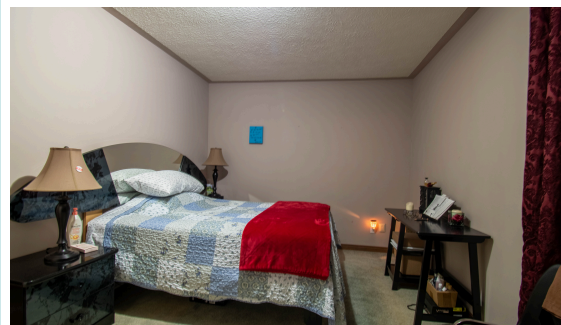




760 Norfolk County Road 28, Norfolk



This peaceful country property boasts numerous features, including a spacious brick ranch home with an attached garage and finished basement. This inviting property has a large lot with scenic country views, an insulated shed (16 ft by 12 ft), and a heated workshop (26 ft by 22 ft). The main floor features an inviting layout with a dining room suitable for a large family gatherings, an eat-in kitchen, and three bedrooms. The fully finished basement includes a recreation room, an additional bedroom, a bathroom, and two extra rooms that could be used for office space or hobbies. Set back from the road, this property is an ideal place to relax and enjoy the fresh country breeze. Asking \$750,000 MLS®

Bedrooms: 3 + 1
 Water Source: Sandpoint Well
 Heat Source: Forced Air / Gas
 Sq. Ft.: 1,200 sq. ft

Bathrooms: 2 + 1
 Sewer: Septic System
 Taxes: \$3,763.72/2024
 Lot Size: 162.25' x 233.90'

**YOUR LOCAL
 REAL ESTATE TEAM**

Erie's Edge
 Real Estate Ltd., Brokerage

REALTORS® Greg Mitchell, Krystal West,
 Scott Gilvesy and Jeff VanRybroeck

519.409.7653
 (SOLD)

www.YLRET.com

